

AGENDA

DES MOINES CITY COUNCIL
MUNICIPAL FACILITIES COMMITTEE
City Council Chambers
21630 11th Avenue S, Suite C.
Des Moines, Washington
Thursday, January 23, 2025 - 4:00 PM

Municipal Facilities Committee: Chair Jeremy Nutting, Vice Chair Matt Mahoney, Gene Achziger

CALL TO ORDER

AGENDA

- Item 1. APPROVAL OF NOVEMBER 24, 2024 MINUTES
[October 24, 2024 Draft Meeting Minutes](#)
- Item 2. 2025 MUNICIPAL FACILITIES COMMITTEE WORK PLAN – DRAFT
- Staff will present a work plan for discussion.
[Municipal Facility Committee Draft 2025 Work Plan](#)
- Item 3. MEMORIAL FLAG TRIANGLE PARK PROJECT UPDATE
- Staff will provide a status update on the Memorial Flag Triangle Project.
[Municipal Facilities Memorial Triangle Memo](#)
[Memorial Flag Triangle Presentation](#)
[Preliminary Design Concept Public Survey](#)
[Public Survey Response Summary](#)
- Item 4. SENIOR CENTER/ACTIVITY CENTER ROOF REPLACEMENT UPDATE
- Staff will provide an update.
- Item 5. CUSTODIAN CONTRACT UPDATE
- Staff will provide an update.

ADJOURNMENT

Draft Minutes Des Moines City Council Municipal Facilities Committee – 10/24/2024

Council Members

**Jeremy Nutting, Chair
Matt Mahoney, Vice-Chair
Gene Achziger**

City Staff

**Tim George, Interim City Manager
Scott Wilkens, Harbormaster
Katy Bevegni, Assistant Harbormaster
Mike Slevin, Public Works Director
Matt Hutchins, Acting City Attorney
Sara Lee, Deputy City Clerk
Laura Hopp, Admin Coordinator I
Jodi Grager, Admin Coordinator I**

Guests: Bill Lindscott

Meeting called to order: 4:00 pm on November 24, 2024 in the Council Chambers

Agenda

1. Approval of 09.26.2024 Minutes
2. Marina Dry Stack Facilities

Meeting:

1. The 09.26.2024 Municipal Facilities Minutes were approved as submitted.
2. Harbormaster Scott Wilkins and Assistant Harbormaster Katy Bevegni provided background on proposed Marina improvements. The cost of building a dry stack facility is likely between five to six million with annual expenses of approximately \$200,000 per year which would include two employees and utilities. The potential revenue is one million annually. The facility would allow for reorganization of docks to provide more slips for larger boats. The committee discussed the community's desire for a boat launch. A conservative timeframe to begin operations at a storage facility is within five years. The project is also dependent on loan capacity for funding.

The meeting was adjourned at 4:20 p.m.

Minutes submitted by: Jodi Grager, Public Works Admin Coordinator

**Draft
Municipal Facilities Committee
2025 Work Plan**

January

2025 Work Plan
Memorial Flag Triangle Park Project Update
Senior Center Roof/Solar Installation
Custodian Contract Updates

February

L, M, N Dock Replacement CIP Project Update
Midway Park Project

March

Marina/Beach Park and Redondo Paid Parking Updates
P.D./Service Center Gates

April

Marina Master Plan presentation

May

Marina CIP Project updates

June

July

Marina/Redondo Pay Parking updates.

August

September

CIP Project Updates

October

TBD

November

CIP Project Updates

December



MUNICIPAL FACILITIES UPDATE JANUARY 2025

01.23.2025 Item #3
Attachment #1

MEMORIAL FLAG TRIANGLE PROJECT UPDATE

Current Design Status:

- Public outreach survey conducted in March, 2024, approximately 120 responses received
- Design documents are substantially complete with bid documents to be ready by the end of the month
- Staff have active Task Assignment with consultant firm (Psomas) to assist with early procurement, bid advertisement/award, and construction phase support through closeout
- Staff has initiated early procurement of long lead items including: uplighting, flag pole, and signage

Future Council Items:

- Next Council action will be acceptance of responsive low bid
 - Tentatively March 2025

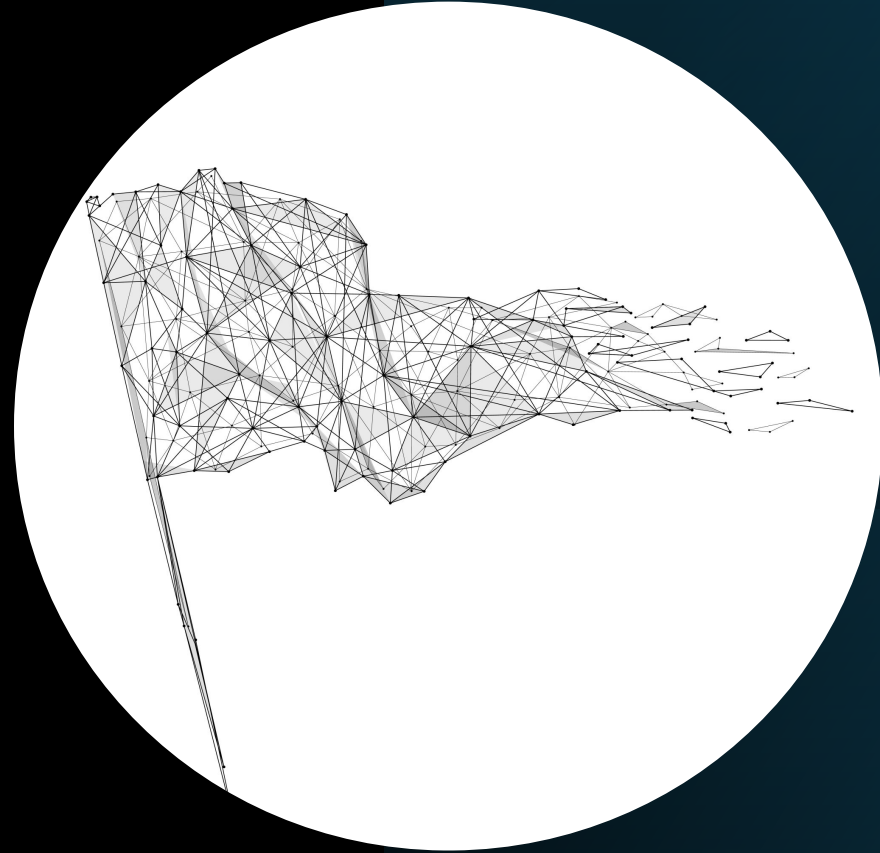
Project Schedule:

- Bid-ready documents finalized by the end of January 2025
- Advertisement: February 2025
- Award: March 2025
- Construction: April – May 2025
 - Ribbon cutting target: on or before Memorial Day 2025

Memorial Flag Triangle

Des Moines City Council Municipal Facilities
Committee

January 23, 2025



Project background



Project was introduced at Council meeting on June 1, 2023

Dual purpose of honoring WWI veterans as well as updating the gateway to Des Moines

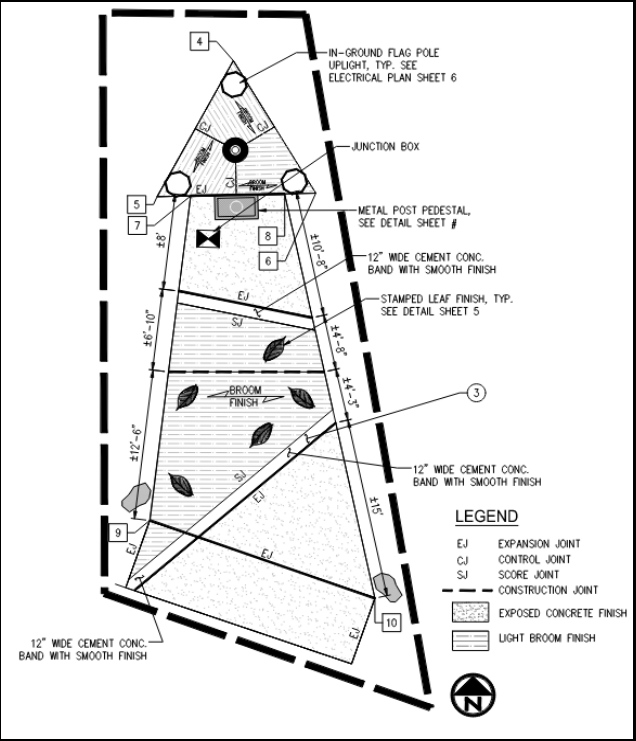
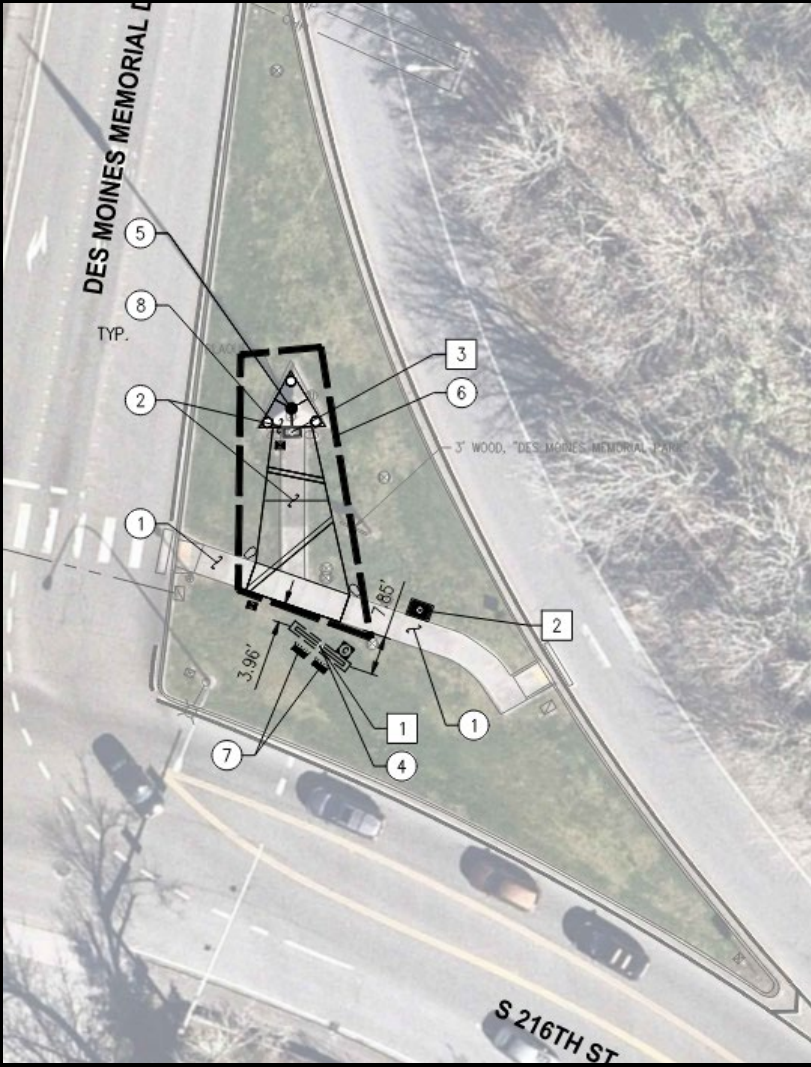


Part of the \$25.1 million Marina and Redondo redevelopment bond

Passed by full Council on June 8, 2023 (5-2)

Overview

- Features:
- New gateway signage
- New flag pole and flag
- Memorial plaque restoration
- New landscaping



LEGEND

EJ	EXPANSION JOINT
CJ	CONTROL JOINT
SJ	SCORE JOINT
- - -	CONSTRUCTION JOINT
[Stippled pattern]	EXPOSED CONCRETE FINISH
[Horizontal lines pattern]	LIGHT BROOM FINISH

Financing (Estimates)

	Full Project
DESIGN	
Design Total	\$ 90,472.16
CONSTRUCTION	
Construction Total	\$ 312,055.46
TOTAL	
Expenditures Total	\$ 402,527.62
Bond Proceeds	\$ 374,000.00
ARPA Funding	\$ -
Sound Transit	\$ 50,000.00
Funding Total	\$ 424,000.00
PROJECT TOTAL BALANCE	\$ 21,472.38

Public Outreach

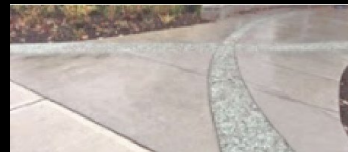
- Approximately 120 responses counted in survey given in March, 2024
- 2 concepts presented for gateway signage
 - Most preferred: 50.4%



- 6 concepts presented given for bench
 - Most preferred: 27%



- 9 concepts presented for concrete finish
 - Most preferred: 34.7%

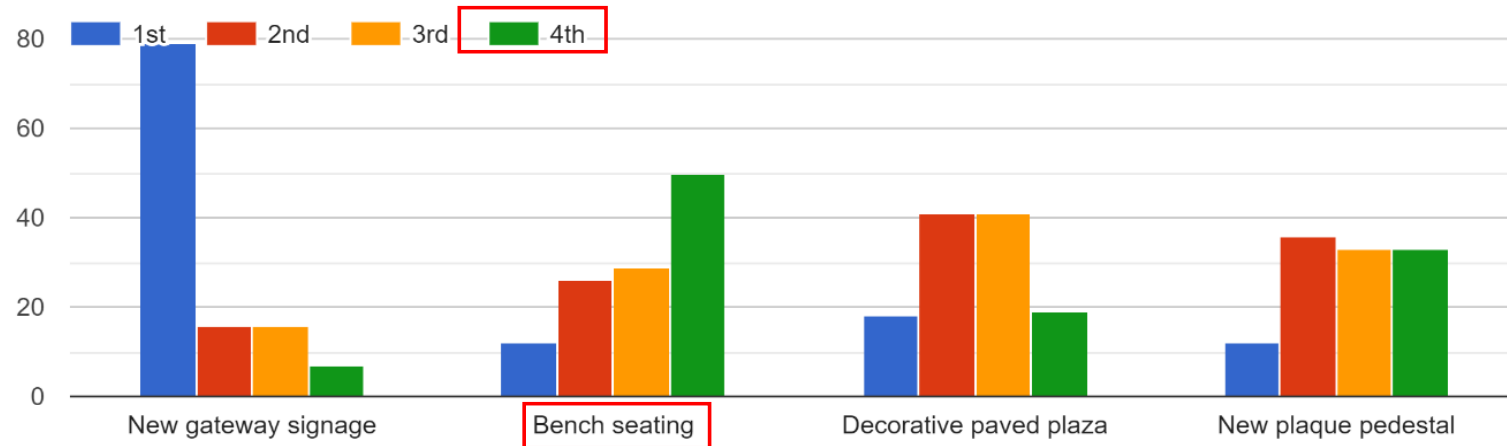


- 4 concepts presented for plaques
 - Most preferred: 27.9%



Public Outreach

Please rank the proposed park improvements in order of priority.



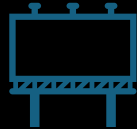
Based on the above feedback and comments citing concerns about safety and access, the benches were removed from final design

Project Timeline



Design Complete: January 2025

Early procurement for long-lead items has been initiated by city staff



Advertisement: February 2025

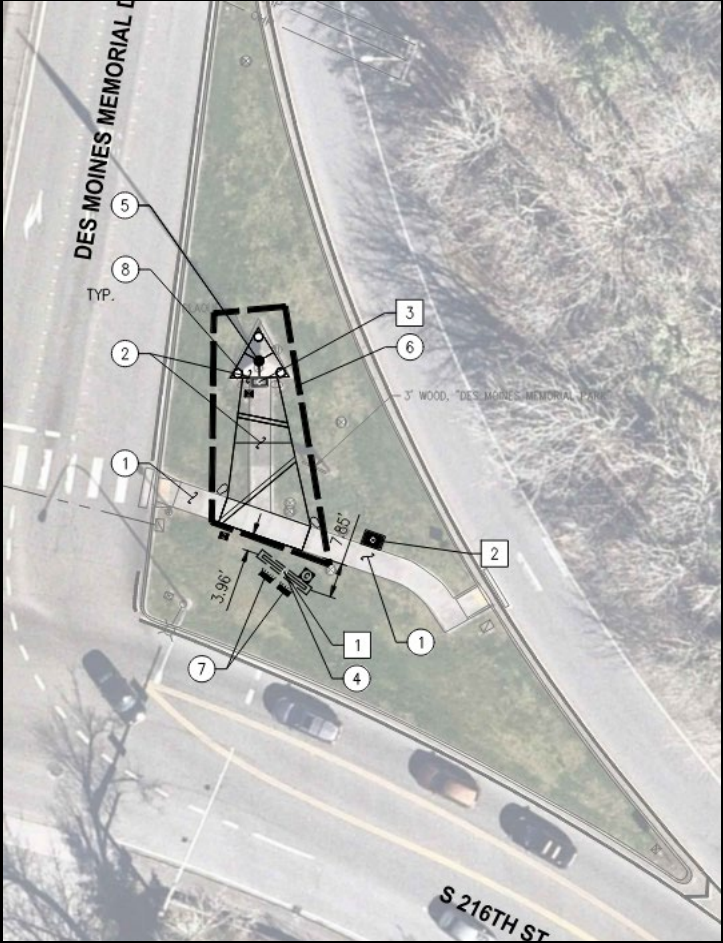


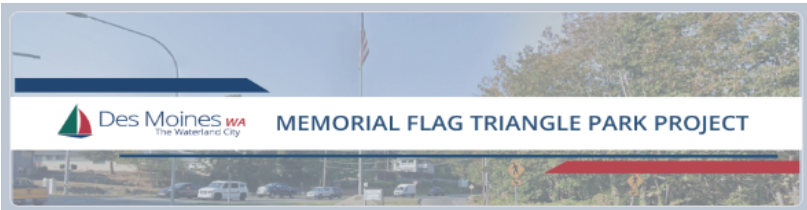
Construction: March 2025



**Ribbon Cutting: May 2025
*(Memorial Day)***

Questions?





Preliminary Design Concept Public Survey

The Memorial Flag Triangle Park project is underway and the City of Des Moines would like your input on preliminary design concepts!

This online survey form will take approximately 5 minutes to complete and will be made available for public feedback through March 25, 2024. Your responses to the online survey will be anonymous and an email is not required.

kpginterdisciplinarydesign@gmail.com [Switch account](#)

Not shared

* An email will only show here if survey user is logged into a Google account while viewing - entering an email is NOT required to take the survey

Project Overview

The Memorial Flag Triangle Park project will incorporate a number of improvements that will enhance the experience of the park for neighborhood pedestrians and visitors to the Memorial, as well as replace aging components and facilitate on-going maintenance of the park. These improvements include:

- The addition of a wider paved plaza area to better accommodate Memorial events
- New gateway signage
- New bench seating
- Replacement of the flag pole and flag
- Restoration of the existing memorial plaque with a new pedestal base
- New grasscrete permeable paving area for maintenance vehicle parking
- New landscaping

Existing Site Conditions



Looking NE towards Memorial Flag Triangle Park from the intersection of Des Moines Memorial Drive and Marine View Drive

Gateway Signage

As part of the Memorial Flag Triangle Park improvements, a new gateway sign will be installed in the park, along with bench seating to the rear of the sign and new landscaping. Each of the proposed sign concepts incorporate elements from existing Des Moines gateway features along S 216th Street.

There are two proposed gateway sign concepts:

Gateway Sign Concept 1



Gateway Sign Concept 2



Which gateway sign concept do you prefer?

- Sign Concept 1
- Sign Concept 2

Park Seating

New precast concrete benches will be added to the plaza and incorporated at the back side of the gateway sign. The benches will provide seating for visitors to the Memorial, as well as a place for neighborhood pedestrians and cyclists to pause and rest.

Which style of bench seating do you prefer?



Bench 1



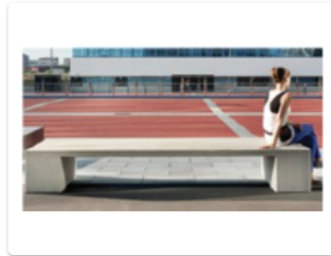
Bench 2



Bench 3



Bench 4



Bench 5



Bench 6

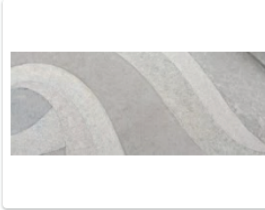
Concrete Surfacing Pattern

The new flag pole plaza area will use durable decorative cement concrete with subtle variations in texture and tone to provide visual interest.

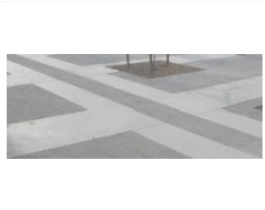
Which style of concrete surfacing do you prefer?



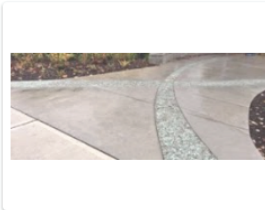
Concrete Concept 1



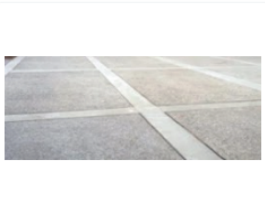
Concrete Concept 2



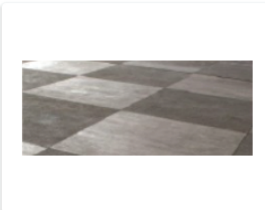
Concrete Concept 3



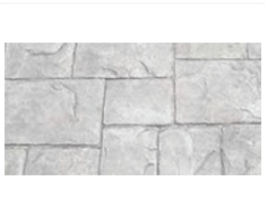
Concrete Concept 4



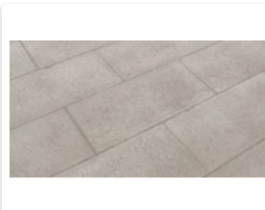
Concrete Concept 5



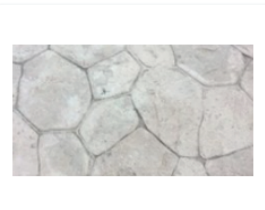
Concrete Concept 6



Concrete Concept 7



Concrete Concept 8



Concrete Concept 9

Memorial Plaque Pedestal

The park project includes restoration of the existing memorial plaque with a new pedestal base. There are four proposed pedestal options:

Which of the plaque pedestal options do you prefer?



Plaque Concept 1



Plaque Concept 2



Plaque Concept 3



Plaque Concept 4

User Information & Additional Feedback (optional)

Please take a moment to tell us about yourself and provide any additional information to further assist in the refinement of the conceptual design.

What is your primary connection to Memorial Flag Triangle Park?

- I live nearby.
- I work nearby.
- I commute through this area.
- Other: _____

What is your age?

- 17 or younger
- 18-34
- 35-50
- 51-64
- 65 and older

How do you identify? (Select all that apply.)

- Alaskan Native, American Indian or Native American
- Arabic, Middle Eastern or North African
- Asian or Pacific Islander
- Black or African American
- Hispanic, Latino or of Spanish Origin
- White or Caucasian
- Biracial or Multiracial
- Prefer not to share

Got More Ideas?

Please feel free to send additional comments, questions, or inspirational images to the City Project Manager, Cong Nguyen, at cnguyen@desmoineswa.gov.

Prioritization and Additional Feedback

Please rank the proposed park improvements in order of priority.

	1st	2nd	3rd	4th
New gateway signage	<input type="radio"/>	<input type="radio"/>	<input type="radio"/>	<input type="radio"/>
Bench seating	<input type="radio"/>	<input type="radio"/>	<input type="radio"/>	<input type="radio"/>
Decorative paved plaza	<input type="radio"/>	<input type="radio"/>	<input type="radio"/>	<input type="radio"/>
New plaque pedestal	<input type="radio"/>	<input type="radio"/>	<input type="radio"/>	<input type="radio"/>

Additional comments or suggestions for Memorial Flag Triangle Park? (optional)

Your answer

Please rank the proposed park improvements in order of priority. [New gateway signage]	Please rank the proposed park improvements in order of priority. [Bench seating]	Please rank the proposed park improvements in order of priority. [Decorative paved plaza]	Please rank the proposed park improvements in order of priority. [New plaque pedestal]	Additional comments or suggestions for Memorial Flag Triangle Park? (optional)	What is your primary connection to Memorial Flag Triangle Park?	What is your age?
1st	3rd	2nd	4th		I live nearby.	51-64
2nd	3rd	4th	1st		I live nearby.	65 and older
2nd	1st	3rd	4th		I live nearby.	51-64
3rd	2nd	1st	4th		I commute through this area.	65 and older
3rd	2nd	1st	4th		I live nearby.	65 and older
1st	2nd	3rd	4th		I live nearby.	65 and older
2nd	1st	4th	3rd		I live nearby.	35-50
1st	3rd	2nd	4th		I work nearby.	51-64
1st	4th	2nd	3rd		I live nearby.	65 and older
1st	2nd	3rd	4th		I commute through this area.	65 and older
1st	4th	2nd	3rd		Live and Work	35-50
4th	3rd	1st	2nd		All three	35-50
				Make a run/bike path through the Marina!	I live nearby.	35-50
4th	1st	3rd	2nd	Please consider improved lighting in the crosswalk to increase pedestrian safety.	I live nearby.	35-50
1st	4th	3rd	2nd		I work nearby.	35-50
1st	3rd	2nd	4th		I commute through this area.	51-64
2nd	3rd	1st	4th		I live nearby.	35-50
1st	2nd	4th	3rd		I live nearby.	35-50
1st	3rd	4th	2nd		I live nearby.	51-64
1st	3rd	2nd	4th		I commute through this area.	51-64
2nd	4th	1st	3rd	Please put in a sidewalk and bike lane on Des Moines memorial drive south from 200th to the park so families and residents from North Hill aren't forced to walk or ride to what could be a nice park or downtown on the shoulder.	I live nearby.	35-50
1st	4th	2nd	3rd		I live nearby.	51-64
1st	3rd	4th	2nd		I live nearby.	51-64
4th	3rd	1st	2nd		I live nearby.	51-64
3rd	2nd	1st	4th	This is crazy. I don't support any of this and your survey doesn't allow me to express my opposition. Stop spending wastefully.	I live nearby.	51-64
1st	3rd	4th	2nd		I live nearby.	51-64
1st	3rd	2nd	4th		I live nearby.	51-64
1st	4th	3rd	2nd		I live nearby.	51-64
1st	4th	2nd	3rd		I live nearby.	65 and older
1st	2nd	3rd	4th		I live nearby.	51-64
2nd	4th	3rd	1st	Too much traffic to encourage pedestrians occupancy	I work nearby.	18-34
1st	2nd	3rd	4th		I live nearby.	51-64
1st	3rd	4th	2nd	This seems like a total waste of money.	I live nearby.	65 and older
1st	4th	3rd	2nd		I live nearby and drive by frequently	51-64
				As an Iraq war veteran I don't want anything done until veterans the City of Des Moines and King County have hired veterans to be at least 6% of their workforce. Because 1% is discrimination.	I live nearby.	35-50
1st	2nd	3rd	4th		I live nearby.	65 and older
2nd	3rd	4th	1st		I live nearby.	65 and older
	2nd	1st	3rd		Other	65 and older
3rd	1st	2nd	4th	You're doing an amazing job! Keep up the good work. #HOPE	I work nearby.	18-34

1st	4th	2nd	3rd		I live nearby.	35-50
3rd	2nd	1st	4th		I commute through this area.	18-34
1st	4th	2nd	3rd		I live nearby.	51-64
1st	2nd	3rd			I live nearby.	35-50
2nd	1st	3rd	4th		I live nearby.	18-34
3rd		1st	2nd	Sign placement will be important because this is NOT the beginning of Des Moines from all directions.	I live nearby.	51-64
1st	4th	3rd	2nd		I work nearby.	35-50
1st	4th	2nd	3rd		I live nearby.	51-64
2nd	4th	3rd	1st		I commute through this area.	65 and older
1st	4th	3rd	2nd	USAF USA USCG USMC INSIGNIA	I live nearby.	65 and older
1st	4th	2nd	3rd		I work nearby.	51-64
1st	3rd	4th	2nd		I live nearby.	51-64
1st	4th	2nd	3rd		I live nearby.	18-34
1st	3rd	2nd	4th		I live nearby.	
2nd	3rd	1st	4th		I live nearby.	65 and older
1st	4th	2nd	3rd		I live nearby.	65 and older
1st	4th	2nd	3rd		I live nearby.	65 and older
3rd	4th	2nd	1st		I live nearby.	35-50
1st	2nd	4th	3rd		I live nearby.	51-64
3rd	4th	2nd	1st	Concept is flawed. This isn't an area that veterans can easily come to or public in general. Very small space on a busy road . . . how are people supposed to access this without being in harms way of a very busy road.	I live nearby.	65 and older
1st	4th	3rd	2nd		I live nearby.	65 and older
3rd	1st	2nd	4th	Make sure flags are properly illuminated at night	I live nearby.	51-64
2nd	3rd	4th	1st		I live nearby.	35-50
2nd	3rd	4th	1st		I live nearby.	65 and older
1st	3rd	2nd	4th		I work nearby.	51-64
1st	4th	3rd	2nd		I live nearby.	35-50
1st	2nd	3rd	4th		I live nearby.	65 and older
1st	2nd	4th	3rd		I commute through this area.	65 and older
1st	2nd	3rd	4th	It would be nice if the bench was a little protected from traffic. Statistically it's a low risk of being injured, but the appearance of cars flying by creates a feeling of unease. Maybe a small slightly raised circular patio sitting area?	I live nearby.	35-50
1st	3rd	2nd	4th		I live nearby.	35-50
4th	2nd	3rd	1st	I'd love to not lose calls when I get near the flag pole. Calls drop in that vicinity and it's extremely frustrating. Friends and family know - "oh you're near the flag pole" and many will wait until reception picks up again. Please don't spend a bunch of money on designs that will invite graffiti/tagging. The less surface area the better - no solid sides of any design. I also vote for less paved area - keeping the grass or some other low growing low maintenance ground cover. I also vote for a sign style but didn't really like either one - something smaller - Normandy Park's sign is not so large like Des Moines planned ones - I like it better. Also the cross walk on east side is scary - cars round that corner sometimes fast heading north and the shoulder is narrow there.	I live nearby.	51-64
3rd	1st	2nd	4th	Not fair to ask feedback without sharing cost data.	I live nearby.	
1st	2nd	3rd	4th		I live nearby.	51-64
1st	2nd	3rd	4th		I live nearby.	18-34

1st	2nd	4th	3rd	This does not seem like a safe idea to me. There is so much traffic in that area that having to dodge pedestrians going to the park is going to create a hazard to cars and pedestrians. What accommodations are being made for disabled people? It will slow traffic down even more - have you driven on those roads during heavy commute times? Please rethink this.	I live nearby.	
1st	4th	3rd	2nd	No seating or paving. Just sign updates. It's not a destination park - just a welcome to des moines.	I live nearby.	18-34
1st	4th	2nd	3rd	Traffic noise, emissions and collision hazards and the small size of the park make this an unsafe place for gathering.	I live nearby.	65 and older
1st	3rd	2nd	4th		I live nearby.	65 and older
1st	4th	2nd	3rd		I live nearby.	65 and older
1st	4th	2nd	3rd		I was selected to provide utility box graphics along the Memorial Drive and I live nearby.	65 and older
1st	4th	3rd	2nd	It is a terrible location. No one is ever going to sit on one of your benches or congregate on the plaza. Save the city's money and leave it alone. The gateway sign is an ok idea if you have to do something.	I live nearby.	65 and older
1st	4th	3rd	2nd		I live nearby.	35-50
1st	4th	2nd	3rd	Please make sure there's AMPLE landscaping — shrubs and trees — of significant size! Not dinky little grasses and groundcover. Also use species that will survive and not die within months of installation, like often is seen around Des Moines, including at the waterfront where much of what was planted after the seawall construction didn't make it, and zero trees were planted. What was chosen also wasn't intended to be out in the hot sun, so make sure appropriate, hardy plants are used. Prioritize native plants! I'd vote for less benches and more landscaping — it isn't a pleasant place to sit with so much traffic all around, but as the entrance to our town, it should be pretty. Right now it's just grass and a flagpole, so let's have some trees! Shore Pine! They don't get huge and will be green year round.	I live nearby.	51-64
2nd	3rd	1st	4th		I live nearby.	35-50
3rd	2nd	1st			I live nearby.	35-50
1st	3rd	2nd	4th	A "lot" of work and care needs to be put into landscaping. Currently, the park is just a patch of grass. Our city's approach to landscaping in general leaves much to be desired — most of the tiny bushes that are planted around town and at the waterfront are poorly manicured and die at alarming rates — and I would personally LOVE to see an intensive, sustained, citywide beautification campaign aimed at making our public (and private) spaces more aesthetically pleasing. Just one suggestion: more trees everywhere would be a great idea, especially since smaller plants often seem to suffer from heat.	I live nearby.	
3rd	1st	4th	2nd		I live nearby.	51-64
1st	2nd	3rd	4th		I live nearby.	65 and older
		1st	4th		I live nearby.	51-64
3rd	1st	2nd	4th		I live nearby.	65 and older
4th	3rd	2nd	1st	Don't do it here. Maybe across the street in that empty lot area (directly across to the west)	ALL OF THE ABOVE	35-50

1st				I would love to see flower pots added and regularly decorated like the ones in town. I would be cautious about seating as that area is surrounded by roads -not very safe for children. This beatification will be a nice feature ending Des Moines Memorial Blvd. Thank you!	I commute through this area.	51-64
1st	4th	2nd	3rd		I live nearby.	65 and older
1st	4th	3rd	2nd	Please don't spend a lot of money on that. It's basically a median. Nobody ever hangs out there and for good reason.	I commute through this area.	51-64
3rd	2nd	1st	4th		I live nearby.	65 and older
1st		2nd	3rd		I commute through this area.	51-64
	3rd	1st	2nd	It would be fine with me if you just replace the flag pole and leave everything else as it is. Create some sort of fund for those less fortunate	I drive past it occasionally	65 and older
1st	4th	2nd	3rd		I live nearby.	35-50
1st	4th	3rd	2nd		I commute through this area.	35-50
3rd	1st	4th	2nd		I live nearby.	35-50
4th	2nd	3rd	1st	If there is any concrete paving as in a sidewalk, please make sure that the surface is kept even so that people can avoid tripping. I'd be in favor of less paving, and more "grasscrete" to allow for permeability - provided that could be maintained regularly. I'd like to see as much green landscaping as is practical - but in that area of heavy traffic it shouldn't be anything that would attract wildlife or obstruct driver views. I appreciated the rose garden that was there years ago. Perhaps there could be some type of hardier plantings that would provide some seasonal interest and beauty? Re: the sign - it wasn't clear to me in which direction the sign would be oriented - kind of awkward with two entrances into town at that intersection. And I wouldn't want it to distract from the fact that the plaza is intended to honor veterans. I'm not against providing a bench of some sort, but again the traffic is so heavy that that triangle doesn't provide a good place for reflection or contemplation, and ceremonial activities in that area would be compromised by traffic noise, and could also lead to driver distraction and pedestrian danger. What I'd favor is a beautifully landscaped triangle with a refreshed plaque and a well-lit flagpole -- all well-maintained to show our community's respect for our veterans' service. And finally, my husband designed the nearby Des Moines Memorial Drive utility box wrap, which is one of a series that can be viewed all along Des Moines Memorial Drive. It would be nice to for the plaza to have some kind of resonance or design relationship with that installation - rather than have the two memorials be treated as two discrete gestures.	I live nearby and my father was a veteran of World War II and my grandfathers were veterans of World War I. Also, my husband designed the utility box wraps for the Des Moines Memorial Drive Preservation Association.	65 and older
1st	3rd	4th	2nd		I live nearby.	51-64
1st	4th	2nd	3rd		I live nearby.	51-64
2nd	4th	1st	3rd	The area is tired and dated and needs to be improved and is fitting for a memorial to our WW1 veterans and as the entrance to our city. However, since there is no parking and the area is difficult to access by pedestrians, the design should be economical and tasteful. If a bench is installed it should be small as it will be rarely used.	i live in the city of Des Moines	65 and older
1st	4th	2nd	3rd		I live nearby.	35-50

1st	4th	3rd	2nd	More lighting on the flag and modern, bright lighting on the new gateway sign. Have an overall focus on a modern feel that really welcomes people to the new, more modern and lively Des Moines.	I live nearby.	35-50
1st	4th	2nd	3rd		I live nearby.	51-64
2nd	3rd	4th	1st	Any design elements that will discourage vagrants from sleeping or camping in the park are welcome.	I work nearby.	51-64
1st	2nd	4th	3rd	In relation to other projects we could allocate dollar to, I would put this one very low on the priority list.	I live nearby.	51-64
1st	3rd	2nd	4th	Impossible to tell from the images which way the "wave" in the gateway signage is "moving," and if it'd be oriented N-S or E-W. If N-S, I'd like to see the highest part of wave on the South side. It'll look weird otherwise, as the triangle of the plot would be in opposition with the sizing. If it's E-W there's less of an issue with sizing, but it would be more thoughtful if the wave appears to be moving East just like the waves in Des Moines.	I live nearby.	35-50
3rd	1st	2nd	4th		I work nearby.	18-34
1st	4th	3rd	2nd		I live nearby.	51-64
1st	4th			This is unnecessary and a weird use of money. To call this a park is a stretch. I support signage but the accoutrements necessary to make this a park are ridiculous.	I live nearby.	51-64
1st	4th	3rd	2nd	This seems like a really dumb idea and waste of resources. I've crossed the road from Marine View to Memorial Drive into the triangle many times and it's totally dangerous. Big Catch Plaza less than a block away and has benches I've never seen anyone sit at. Maybe build some memorial sidewalks in town and put benches on those? Or maybe fix the concrete barricade in the corner of 216th coming up to Marine View? Just a thought.	I live nearby.	51-64
1st	4th	3rd	2nd		I live nearby.	51-64
4th	1st	2nd	3rd		I live nearby.	65 and older
1st	4th	3rd	2nd	This is a busy intersection that lacks the appropriate and much needed sidewalks to get to it from Des Moines Memorial Drive. Money should be spent putting in sidewalks along Memorial Drive all the way to 200th. This is an awful proposal and a complete waste of money for a piece of land nobody should be visiting.	I live nearby.	35-50
1st	4th	3rd	2nd	Ignore all of my choices. This is a memorial in the middle of an incredibly busy intersection that people will be taking their lives into their hands trying to access. It is ridiculous. You've got a \$300T whole in your budget and you're spending money on something no one will access? Stop wasting our tax dollars.	I'm going to be asked to pay more taxes because you're wasting money on this crap.	51-64
1st	4th	3rd	2nd	This is an absolute waste of money!! Please stop your wasteful spending!!	I live nearby.	51-64
1st	4th	3rd	2nd	This is a waste of money. A park is not a place that is driven by and unusable by people. My kids have asked how it can be a park when it's on a busy road like it is. This is an expensive project for a flag pole and our city should invest the money in the lack of play structures for the kids that live in the city. Instead of blocking access to the parks and improving useless parks.	I commute through this area.	35-50
				There are way more important things to focus on in this city. This is a waste of our tax dollars.	I live nearby.	51-64
1st	2nd	3rd	4th	I OPPOSE RAISING MY TAXES FOR THIS PROJECT! Please do not do this project. I do not support this project.	I commute through this area.	35-50